

RG-SPL2032-SC-P

2-In 32-Out e-Lighten Active Optical Splitter

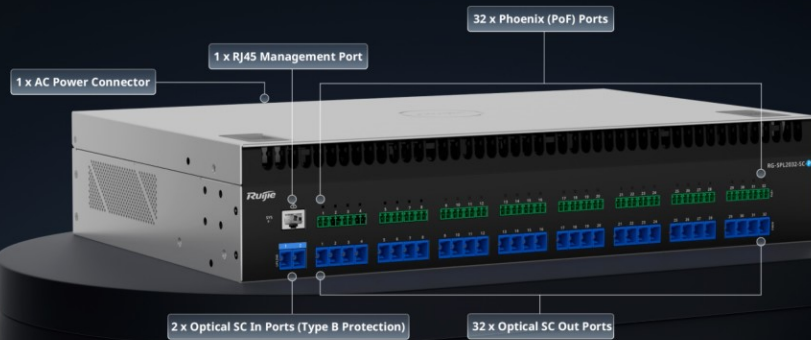


/ Highlights

- Passive/Active Optical Networking Support
- Rack-Mounted Unit
- Compatible with Hybrid Cable (PoF) for Long-Distance Power Supply
- Power Supply Link Protection
- All-in-One Design with Fiber Splice Tray and Cable Management Rack
- Plug-and-Play

RG-SPL2032-SC-P

2-U All-in-One Active Optical Splitter



Industrial-Strength, Enterprise-Reliable



Rack Mounted Unit

Tidy and well-organized cabling



Active Power Supply

Easy connection for hybrid cable (PoF)

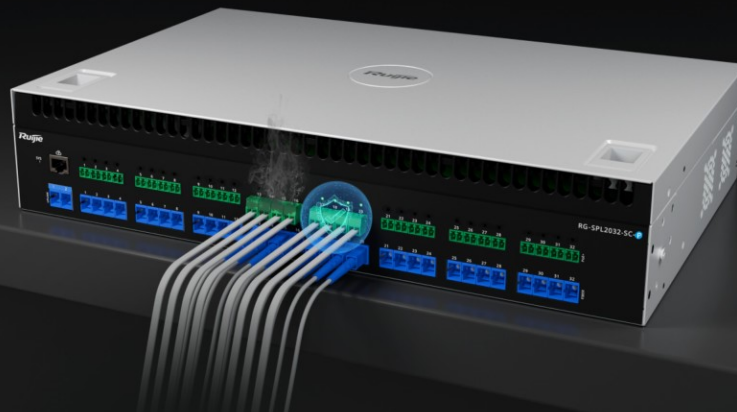


High Reliability

Robust metal chassis, elegant and protective

Power Supply Link Protection

Power Anti-Overload Function on Ports, Ensuring a Fault in One Circuit Will Not Affect Other Power Output Links



Hardware Specifications

Model	RG-SPL2032-SC-P
Port Specifications	
Number of uplink optical ports	2
Number of splitter downlink ports	32
LEDs	1 x system status LED 32 x PoF power supply LEDs
Maximum transmission distance of RG-AWG0.2-2SM-305I	RG-APF1260(MG-P): 150m (PoE Out disabled) 80m (PoE Out enabled)
Maximum transmission distance of RG-AWG0.5-2SM-305I	RG-APF2260(MG): 130m RG-APF1260(MG-P): 360m (PoE Out disabled) 200m (PoE Out enabled) RG-APF2260(MG): 300m
Power Supply and Consumption	
Number of PoF Out ports	32
PoF budget per port	30 W
PoF budget	380 W
PoF Out standard	IEEE 802.3af/at
Power input	AC power supply: <ul style="list-style-type: none">• Rated input voltage: 100 V AC to 240 V AC, 50 Hz or 60 Hz• Maximum input voltage: 90 V AC to 264 V AC, 47 Hz to 63 Hz• Rated input current: 6 A
Maximum power consumption	409 W (full PoF load) 10 W (no PoF load)
Dimensions and Weight	
Weight	6.23 kg (13.73 lbs) (without packaging materials) 8.86 kg (19.53 lbs) (with packaging materials)
Shipping weight	8.86 kg (19.53 lbs, per unit)
Product dimensions (W x D x H)	440 mm x 280 mm x 88 mm (17.32 in. x 11.02 in. x 3.46 in.)
Environment and Reliability	
Operating temperature	0°C to +40°C (+32°F to +104°F)

Hardware Specifications

Model	RG-SPL2032-SC-P
Fan	2 x fixed fans
Hot swapping of cables	Hot swapping supported by the service ports and power connector
Cooling	Air cooling, left-to-right airflow
MTBF	400,000 hours (about 45 years)
Surge protection	Service port: ± 6 kV for common mode Power connector: ± 6 kV for both common mode and differential mode
Acoustic noise	27°C(80.6°F): < 50 dB
Storage temperature	-40°C to +70°C (-40°F to +158°F)
Operating humidity	10% RH to 90% RH (non-condensing)
Storage humidity	5% RH to 95% RH (non-condensing)
Altitude	Operating altitude: -500 m to +5,000 m (-1,640.42 ft. to +16,404.20 ft.) Storage altitude: -500 m to +5,000 m (-1,640.42 ft. to +16,404.20 ft.)
Mounting options	Rack
Certification and Regulatory Compliance	
EMC	EN 55032 EN 55035 EN 300386 EN 61000-3-3 EN IEC 61000-3-2
Safety compliance	IEC 62368-1 IEC 60825-1
RoHS	Yes
Certification	CE, CB

Software Specifications

Model	RG-SPL2032-SC-P
Network Management and Monitoring	
Enabling/Disabling a fan module	No
Basic Configurations	
Power supply management (automatic mode)	Yes
Power supply management (energy-saving mode)	No
Power supply management (static mode)	No
PoF watchdog	Yes
Protection for power overload on PoF ports	Yes
Protection for total PoF power overload	Yes
Alarms for total PoF power overload	No
Ethernet Switching	
Enabling/Disabling PoF on a port	No
System Performance Capacity	
Maximum number of connected RG-APF1260(MG-P)	With PoE Out enabled: 14 (Recommended) 20 (Maximum) With PoE Out disabled: 26 (Recommended) 28 (Maximum) Note: When the number of APs has reached the limit, some newly connected APs may not work due to power shortage.
Maximum number of connected RG-APF2260(MG)	21 (Recommended) 26 (Maximum) Note: When the number of APs has reached the limit, some newly connected APs may not work due to power shortage.

Ruijie



Ruijie Networks Co., Ltd.

For more information, visit www.ruijie.com or call 86-400-620-8818.